

# Threaded rod G M

The economic threaded rod for standard applications



3



Banisters



Cable duct

## Advantages

- The large packaging unit with up to 50 pieces facilitates handling for series applications.
- A wide selection of standard dimensions up to yard goods in various steel grades and galvanizing types cover a wide range of applications.
- The mechanical properties according to standard EN ISO 898-1 guarantee a safe application.
- Variable anchorage depths allow efficient installation with fischer injection systems.

## Versions

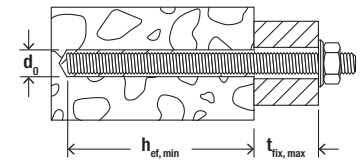
- Zinc-plated steel
- Hot-dip galvanised steel
- Stainless steel

## Building materials

- Suitable for different building materials with various fischer injection mortars
- Approved building materials in the injection mortar documentation

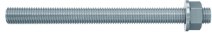
## Functioning

- The threaded rod G M is suitable for pre-positioned and push-through installation.
- The threaded rod G M is set manually by lightly rotating it until it reaches the drill hole base.
- The mortar bonds the entire surface of the threaded rod with the drill hole wall and seals the drill hole.



## Technical data in concrete

### Threaded rod G M



G M

Item	Zinc plated, steel grade 4.8	Zinc plated, steel grade 5.8	Zinc plated, steel grade 8.8	Stainless steel	Hot-dip galvanised steel	Drill hole diameter	Min. / max. anchorage depth	Min. / max. usable length	Min. / max. filling quantity FIS SB	Sales unit
	Item No.	Item No.	Item No.	Item No.	Item No.	$d_0$ [mm]	[mm]	[mm]	[scale units]	[pcs]
	gvz	gvz	gvz	R	hdg					
G M8 x 110	—	561506	561514	—	—	10	60 / 98	1 / 40	2 / 3	50
G M8 x 1000	561502	561507	561515	561537	—	10	60 / 160	—	2 / 5	20
G M10 x 130	—	561508	561516	—	—	12	60 / 116	1 / 56	3 / 5	50
G M10 x 1000	561503	561509	561517	561538	561533	12	60 / 200	—	3 / 7	20
G M12 x 160	—	—	561518	—	562138	14	70 / 143	1 / 72	3 / 7	40
G M12 x 140	—	561510	—	—	—	14	70 / 123	1 / 54	3 / 6	40
G M12 x 190	—	—	—	—	562139	14	70 / 104	1 / 100	3 / 8	40
G M12 x 1000	561504	561511	561519	561539	561534	14	70 / 240	—	3 / 10	15
G M16 x 175	—	—	561520	—	—	18	80 / 154	1 / 75	5 / 10	20
G M16 x 190	—	—	—	—	561528	18	80 / 169	1 / 90	5 / 11	20
G M16 x 250	—	—	561521	—	—	18	80 / 229	1 / 150	5 / 14	20
G M16 x 1000	561505	561512	561522	561540	561535	18	80 / 320	—	5 / 19	10
G M20 x 190	—	—	—	—	561529	24	90 / 165	1 / 76	11 / 19	20
G M20 x 220	—	—	—	—	561530	24	90 / 195	1 / 106	11 / 24	20
G M20 x 240	—	—	—	—	561531	24	90 / 215	1 / 126	11 / 26	20
G M20 x 260	—	—	—	—	561532	24	90 / 235	1 / 146	11 / 29	15
G M20 x 350	—	—	561523	—	—	24	90 / 325	6 / 236	11 / 39	15
G M20 x 1000	—	561513	561524	561541	561536	24	90 / 400	—	11 / 48	5
G M24 x 1000	—	—	561525	—	—	28	96 / 480	—	14 / 69	3
G M27 x 1000	—	—	561526	—	—	30	108 / 540	—	15 / 73	3
G M30 x 1000	—	—	561527	—	—	35	120 / 600	—	24 / 120	3

## Accessories

### Hexagonal nut and washer



Hexagonal nut and washer

Item	Zinc plated, steel grade 8.8	Stainless steel	Width across nut	Washer (outer diameter x thickness)	Match	Sales unit
	Item No.	Item No.	SW [mm]	[mm]	[mm]	[pcs]
	gvz	R				
Nut & washer M8	510509	—	13	16 x 1,6	FIS A M8	50
Nut & washer M10	510510	—	17	20 x 2	FIS A M10	50
Nut & washer M12	510511	—	19	24 x 2,5	FIS A M12	25
Nut & washer M16	510512	—	24	30 x 3	FIS A M16	20
Nut & washer M20	519737	—	30	37 x 3	FIS A M 20	10
Nut & washer M24	552110	—	36	56 x 4	FIS A M 24	5
Nut & washer M30	559124	—	46	56 x 4	—	5
Nut & washer M8	—	510513	13	16 x 1,6	FIS A M8 R	50
Nut & washer M10	—	510514	17	20 x 2	FIS A M10 R	50
Nut & washer M12	—	510515	19	24 x 2,5	FIS A M12 R	25

## Accessories

### Hexagonal nut and washer

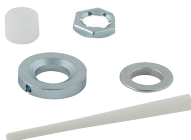


### Hexagonal nut and washer

Item	Zinc plated, steel grade 8.8	Stainless steel	Width across nut	Washer (outer diameter x thickness)	Match	Sales unit
	Item No.	Item No.	SW [mm]	[mm]	[mm]	[pcs]
	gvz	R				
Nut & washer M16	—	510516	24	30 x 3	FIS A M16 R	20
Nut & washer M20	—	519738	30	37 x 3	FIS A M20 R	10
Nut & washer M24	—	552111	36	56 x 4	FIS A M24 R	5

## Accessories

### Filling set



Filling sets for subsequent filling of the annular gap

Item	Item No.	For use with injection mortar	Match	Sales unit [pcs]
Filling set M 12	537218	FIS SB, FIS EM Plus, FIS V	FIS A/RG M 12	10
Filling set M 16	537219	FIS SB, FIS EM Plus, FIS V	FIS A/RG M 16	10
Filling set M 20	537220	FIS SB, FIS EM Plus, FIS V	FIS A/RG M 20	10

# Authorized Dealer



**SAIDEV ENTERPRISE**

Hand Tools | Power Tools & Non Ferrous Metals

More information call us



+91 91502 81224  
+91 9003646564

213/84, Naicker New St, Simmakal,  
Madurai, Tamil Nadu 625001